



Elements of Art

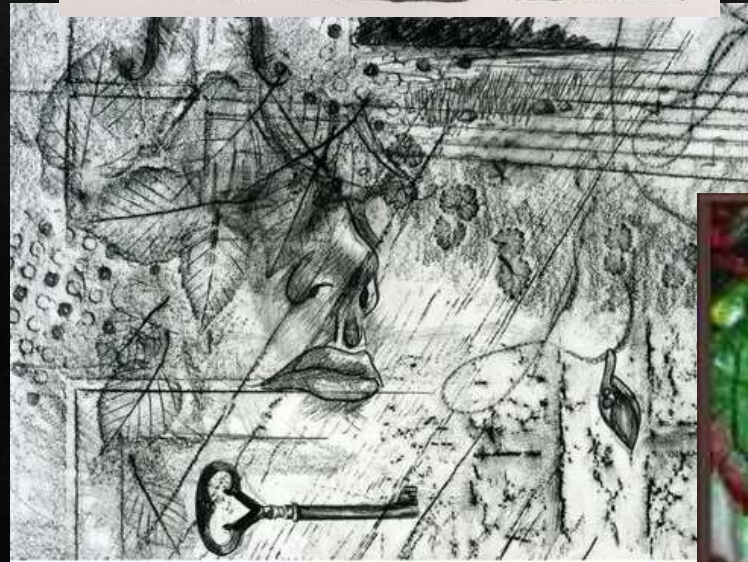
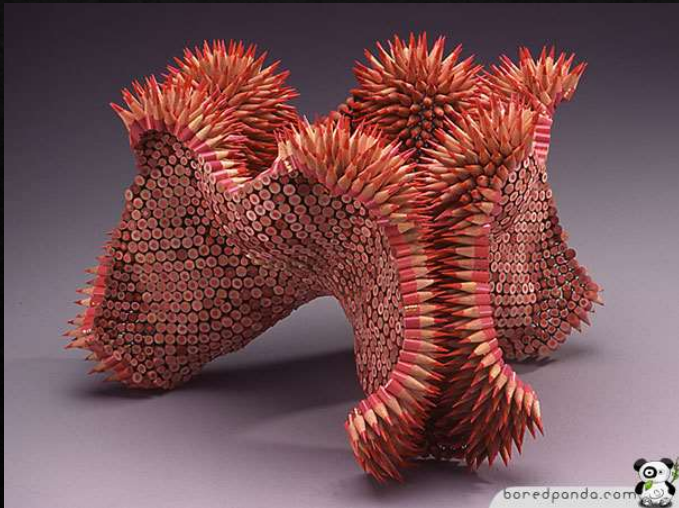
Level 3

The Elements the nuts and bolts...

1. Texture: Describes how something feels if you touched it.
 2. Line: can be described as the path of a point moving through space
 3. Shape: an enclosed area of space created through lines and other elements of the composition; has 2-dimensions (length, width)
 4. Form: something made up of shapes, mass, and volume; has 3- dimensions (length, width, height)
 5. Value: the lightness and darkness of colors and is often described in varying levels of contrast
 6. Space: describes the area inside, around and through objects.
 7. Color: a property of reflected light; By placing colors next to each other in different ways, artists can create a variety of effects
- Note: Composition- placement or arrangement of the elements in a work of art

Texture

- Tactile Texture: what a surface would actually feel like if you touched it.
- Implied Texture: the illusion of a texture; looks like one texture but actually has another.



Texture Rubbings

Texture Rubbings: a method of recording and reproducing textures by placing paper on top of a raised surface and then depositing marks on the paper.

Common uses for this technique include:

- Forensic Sciences: can be used to finding out what was written on a sheet of paper removed from a pad by rubbing the impressions left on subsequent sheets or other backing materials
- Genealogy: to make copies of patterns and inscriptions of gravestones or other incised or textured stone surfaces



Adding Context

Click on the links below to learn more about these artists and their work:

[Andy Goldsworthy](#)

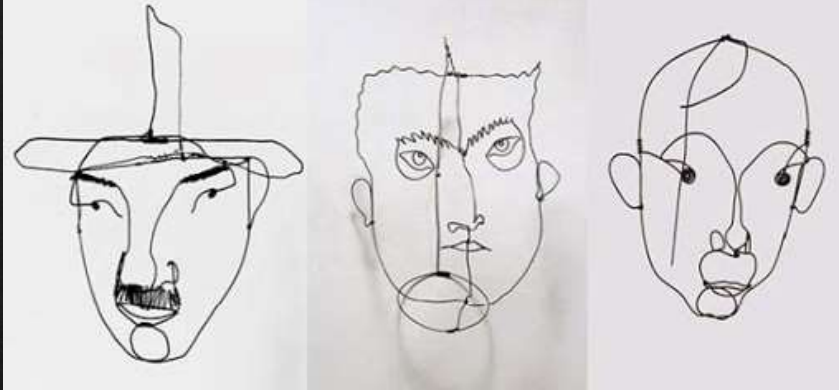
[Meret Oppenheim: Cup, saucer, and spoon](#)



Line

- Literal Line: the trail left behind by a point moving in space
- Implied Lines: aligning stuff in a way to give the idea of a line with out using a literal line.
- Artists like Andy Goldsworthy utilize the quality of the line to create references to bigger ideas.
 - Example: spirals are a common form found in nature (microscopic to galaxies- there's lots of interesting theories about why this is the case) also are commonly used to represent change or a journey.





Adding Context

- Artists like utilize the quality of the line to create references to bigger ideas.
 - Example: spirals are a common form found in nature (microscopic to galaxies; there's lots of interesting theories about why this is the case) also are commonly used to represent change or a journey.

Click on the links below to learn more about these artists and their work:

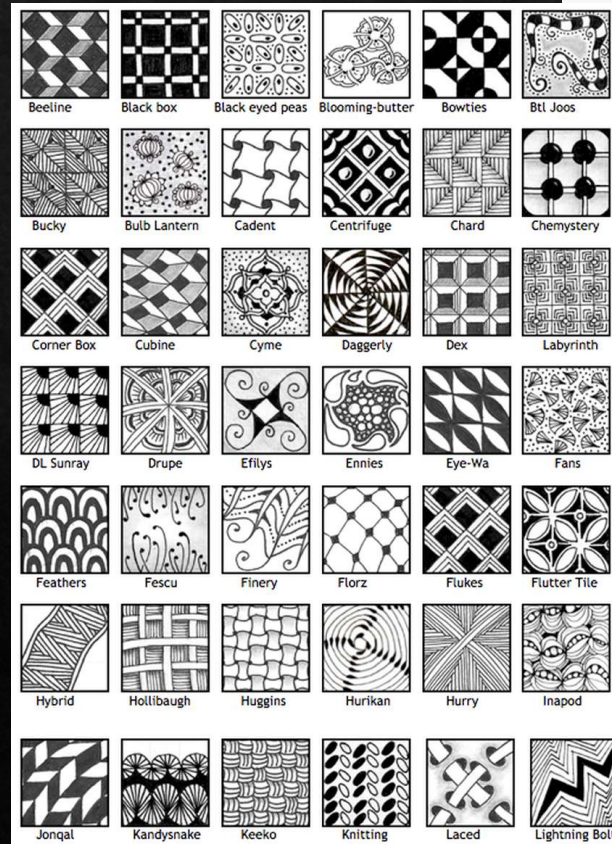
[Jomon Pottery](#)
[Vincent Van Gough](#)
[Alexander Calder](#)



Symbolism

Symbolism Definitions:

- the use of symbols to represent ideas or qualities.
- symbolic meaning attributed to natural objects or facts.
- an artistic and poetic movement or style using symbolic images and indirect suggestion to express mystical ideas, emotions, and states of mind.



Aria 1.

Δ δ
Θ θ
Μ μ
Π π
Υ υ
Φ φ

Using lines to create Symbolism

Describe the kinds of to the right...

What could those lines represent...

- What kind of *people*?
- What kind of *places*?
- What kinds of *things*?
- What kind of *emotions*?
- What *story* could those lines be telling?



Literally Implied Lines

Look closely, there actually are no white literal lines in these images.

How do the artists create the illusion of white lines?

