



Elements of Art

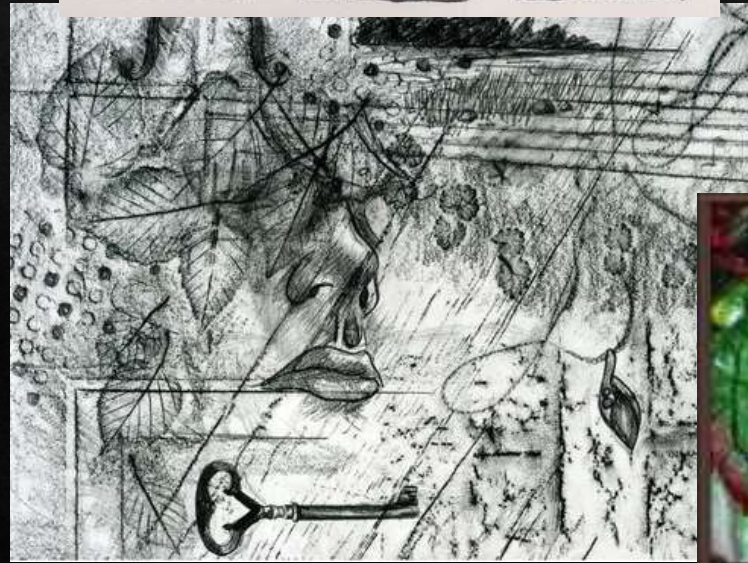
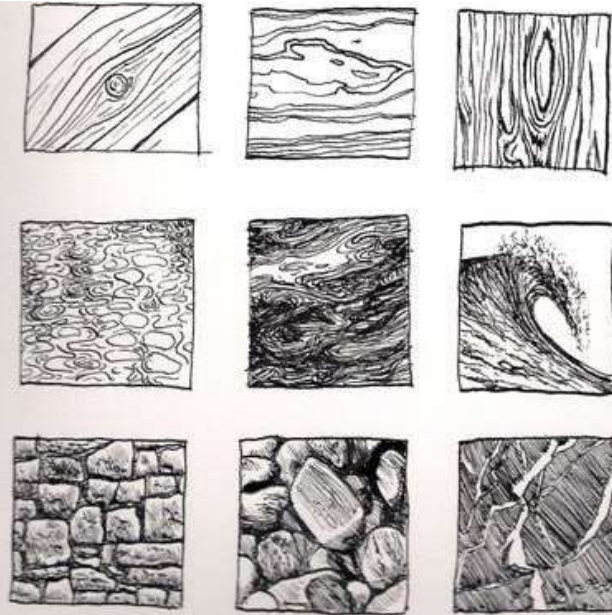
Level 3

The Elements the nuts and bolts...

1. Texture: Describes how something feels if you touched it.
 2. Line: can be described as the path of a point moving through space
 3. Shape: an enclosed area of space created through lines and other elements of the composition; has 2-dimensions (length, width)
 4. Form: something made up of shapes, mass, and volume; has 3- dimensions (length, width, height)
 5. Value: the lightness and darkness of colors and is often described in varying levels of contrast
 6. Space: describes the area inside, around and through objects.
 7. Color: a property of reflected light; By placing colors next to each other in different ways, artists can create a variety of effects
- Note: Composition- placement or arrangement of the elements in a work of art

Texture

- Tactile Texture: what a surface would actually feel like if you touched it.
- Implied Texture: the illusion of a texture; looks like one texture but actually has another.



Texture Rubbings

Texture Rubbings: a method of recording and reproducing textures by placing paper on top of a raised surface and then depositing marks on the paper.



Line

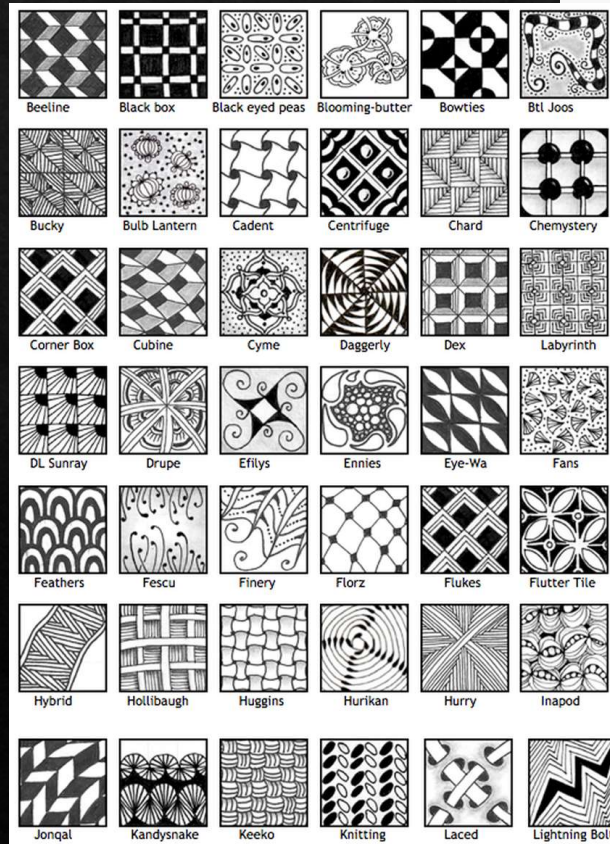
- Literal Line: the trail left behind by a point moving in space
- Implied Lines: aligning stuff in a way to give the idea of a line with out using a literal line.
- Artists like Andy Goldsworthy utilize the quality of the line to create references to bigger ideas.
 - Example: spirals are a common form found in nature (microscopic to galaxies- there's lots of interesting theories about why this is the case) also are commonly used to represent change or a journey.



Symbolism

Symbolism Definitions:

- the use of symbols to represent ideas or qualities.
- symbolic meaning attributed to natural objects or facts.
- an artistic and poetic movement or style using symbolic images and indirect suggestion to express mystical ideas, emotions, and states of mind.



Aria 1.

Δ δ
Θ θ
Μ μ
Π π
Υ υ
Φ φ

Using lines to create Symbolism

Describe the kinds of to the right...

What could those lines represent...

- What kind of *people*?
- What kind of *places*?
- What kinds of *things*?
- What kind of *emotions*?
- What *story* could those lines be telling?



Literally Implied Lines

Look closely, there actually are no white literal lines in these images.

How do the artists create the illusion of white lines?

